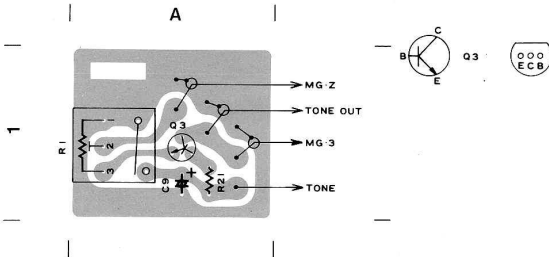


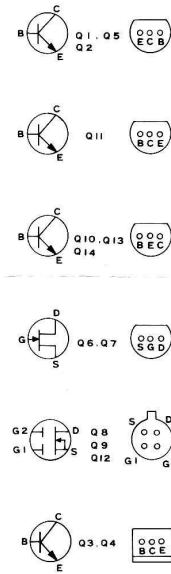
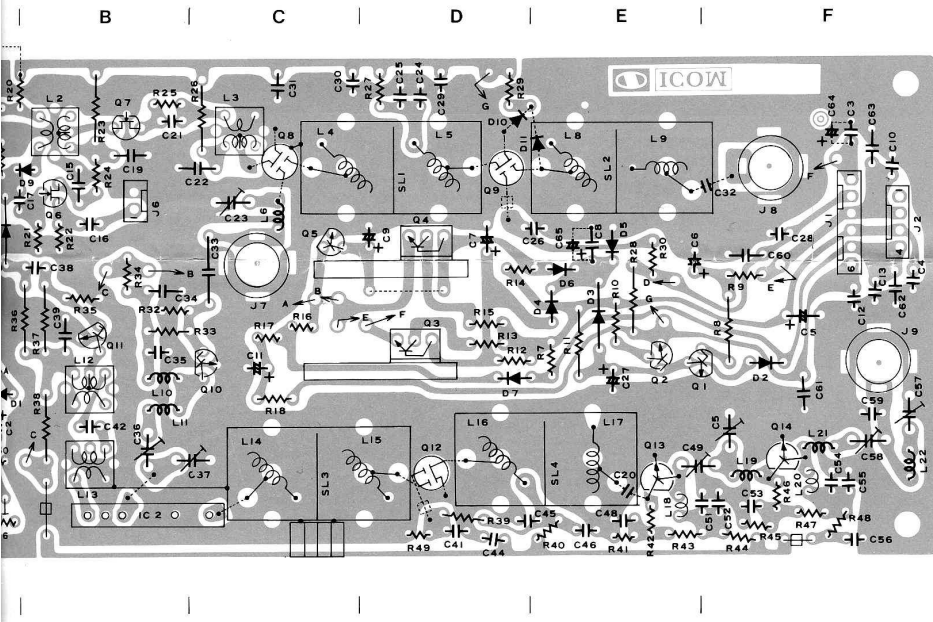
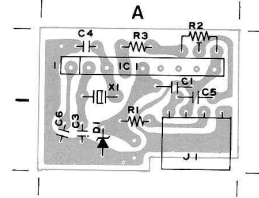
OUT

- MIC GAIN BOARD
- IC-451E ONLY

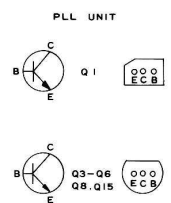
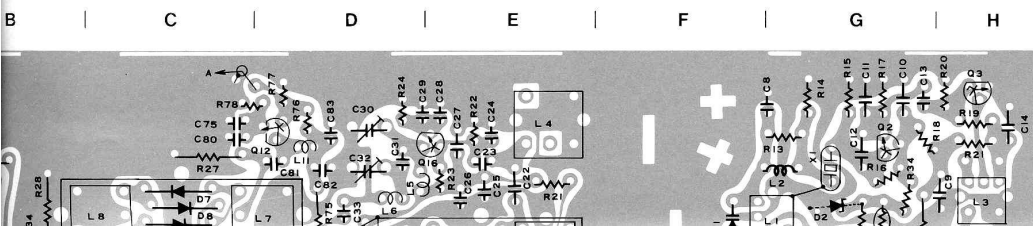


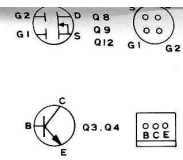
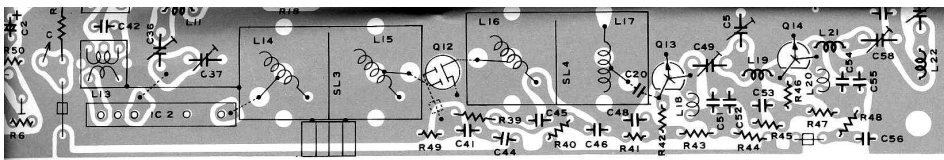
TONE CALL UNIT

- IC-451E ONLY

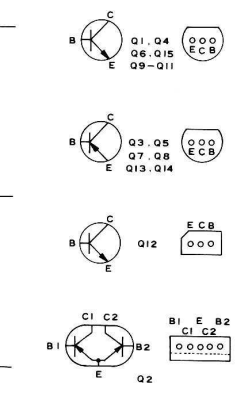
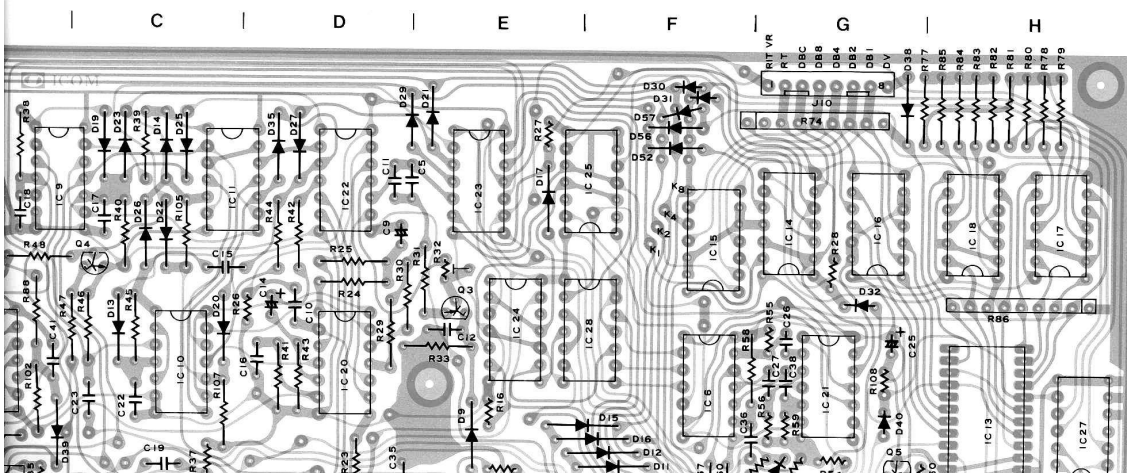
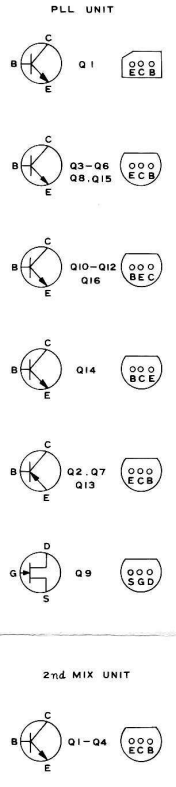
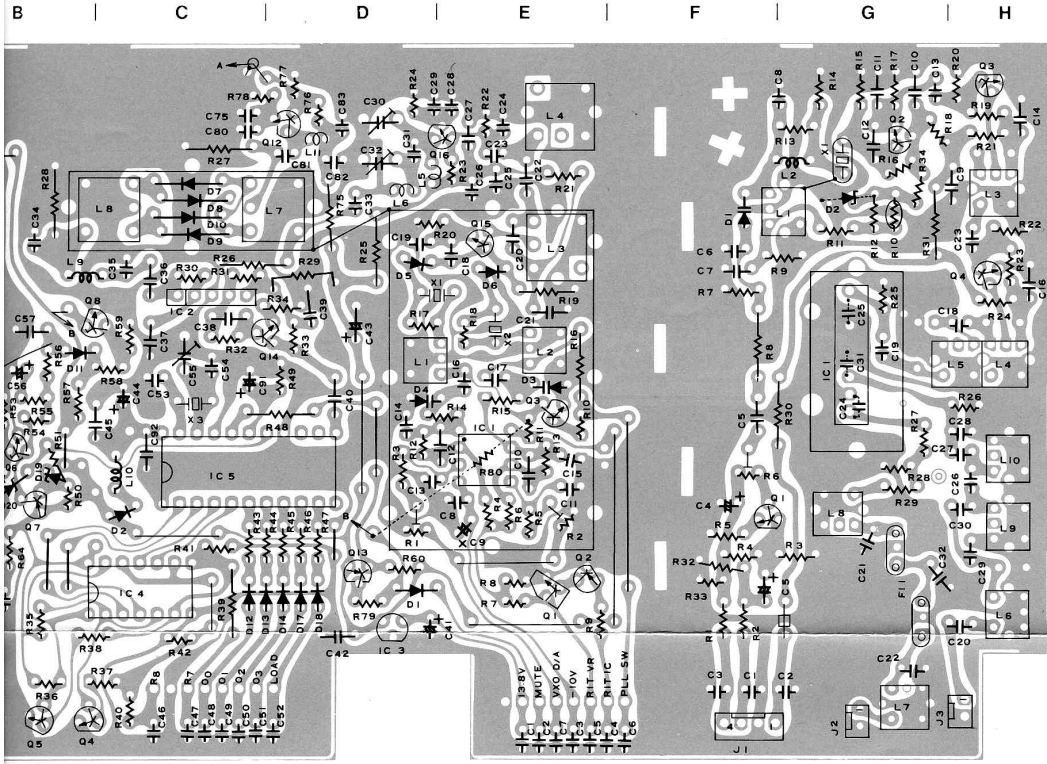


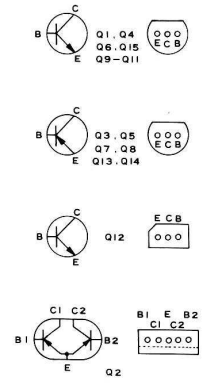
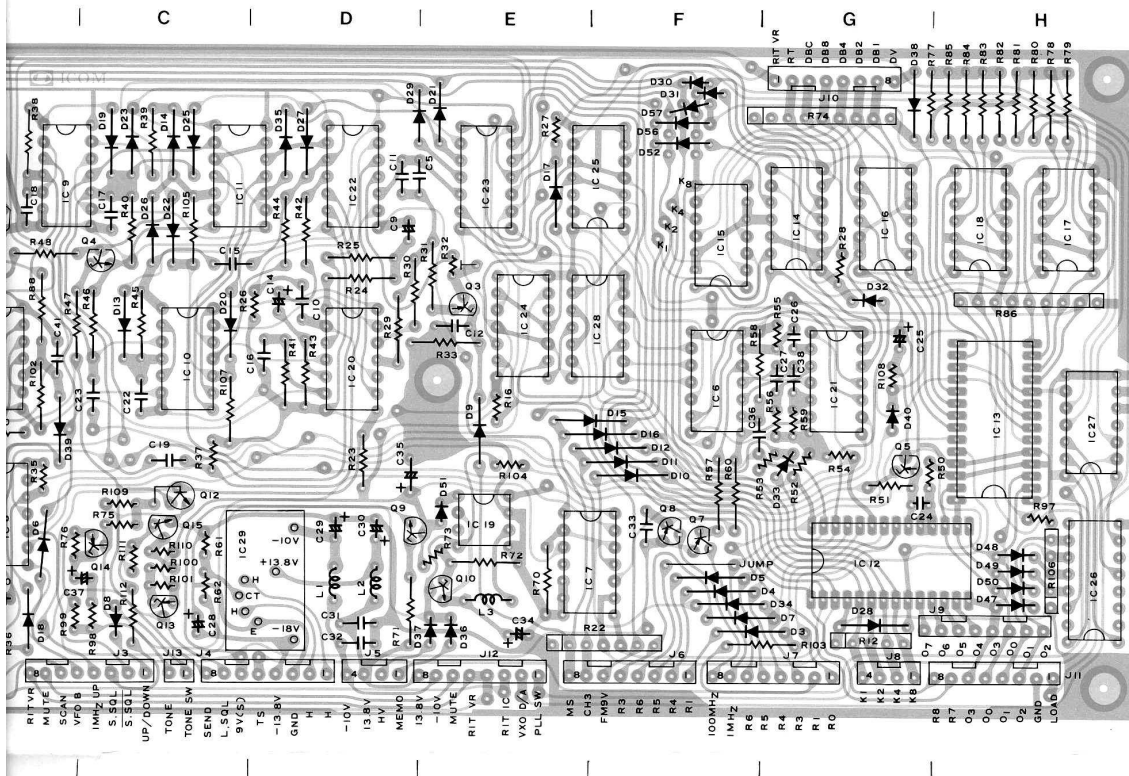
UNIT



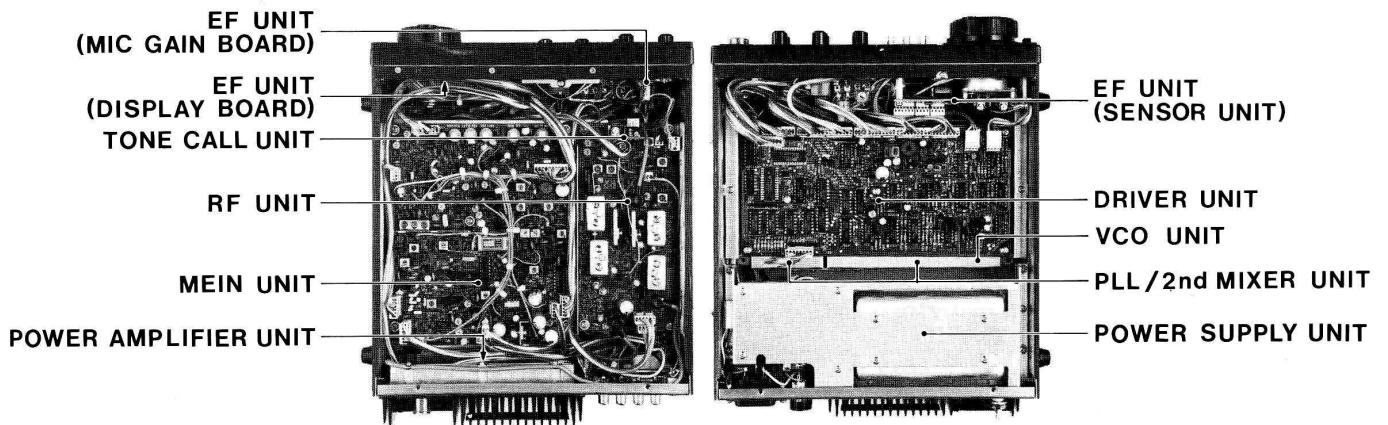


UNIT





UNIT LAYOUT



ICOM INCORPORATED

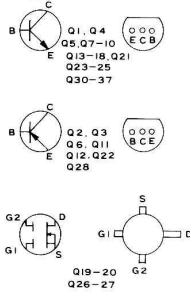
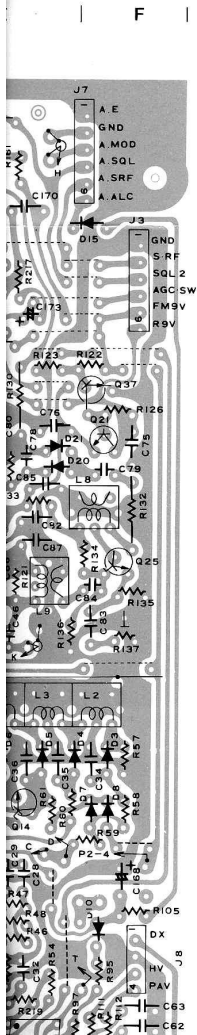
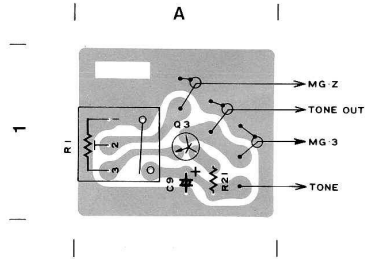
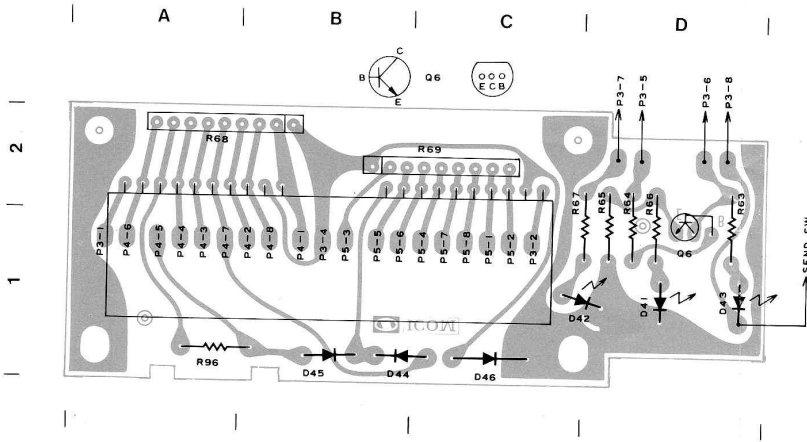
Some components subject to change for an improvement without notice.

Printed in Japan

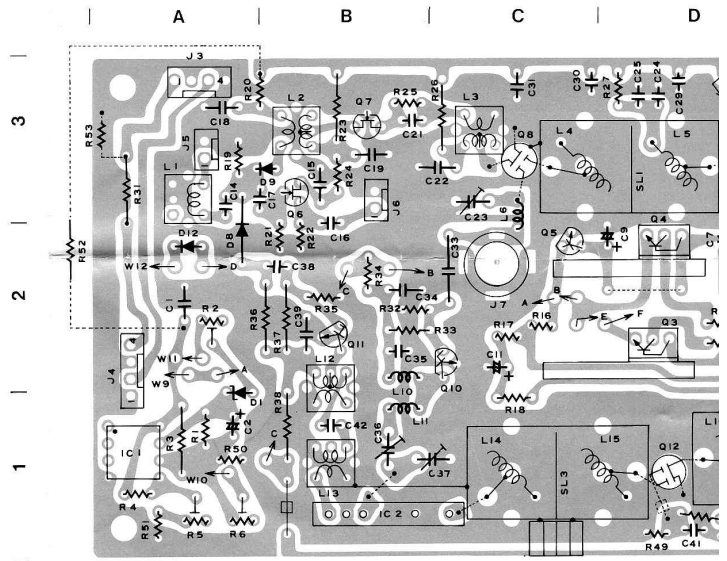
■ DISPLAY BOARD

■ MIC GAIN BOA

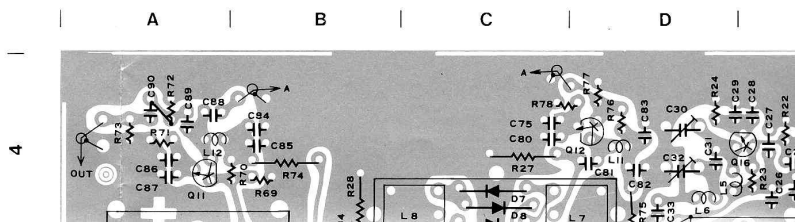
■ IC-451E ONLY

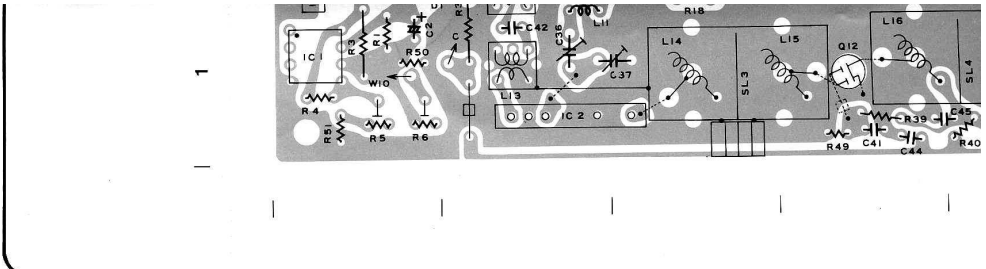
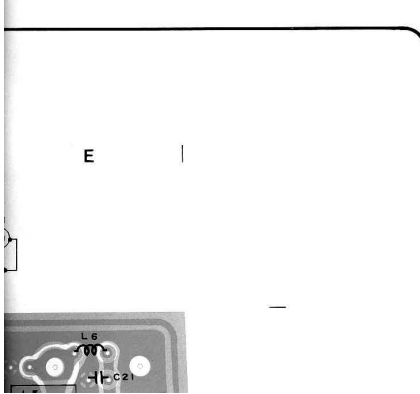
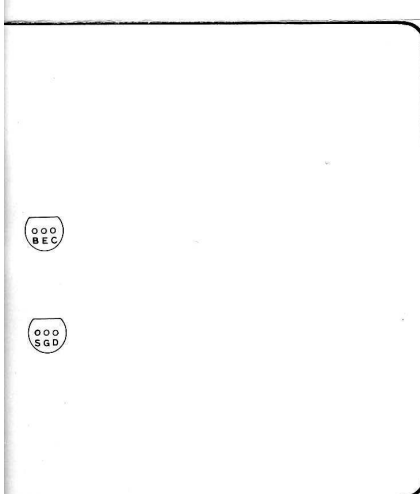
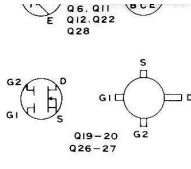
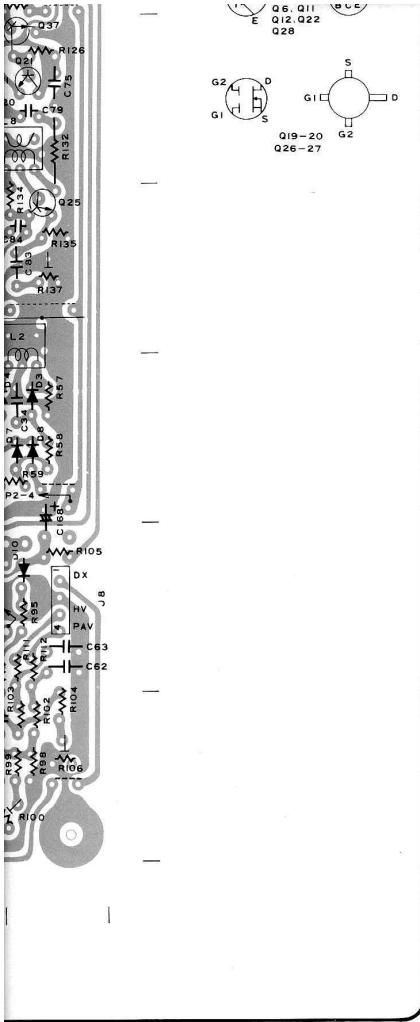


RF UNIT

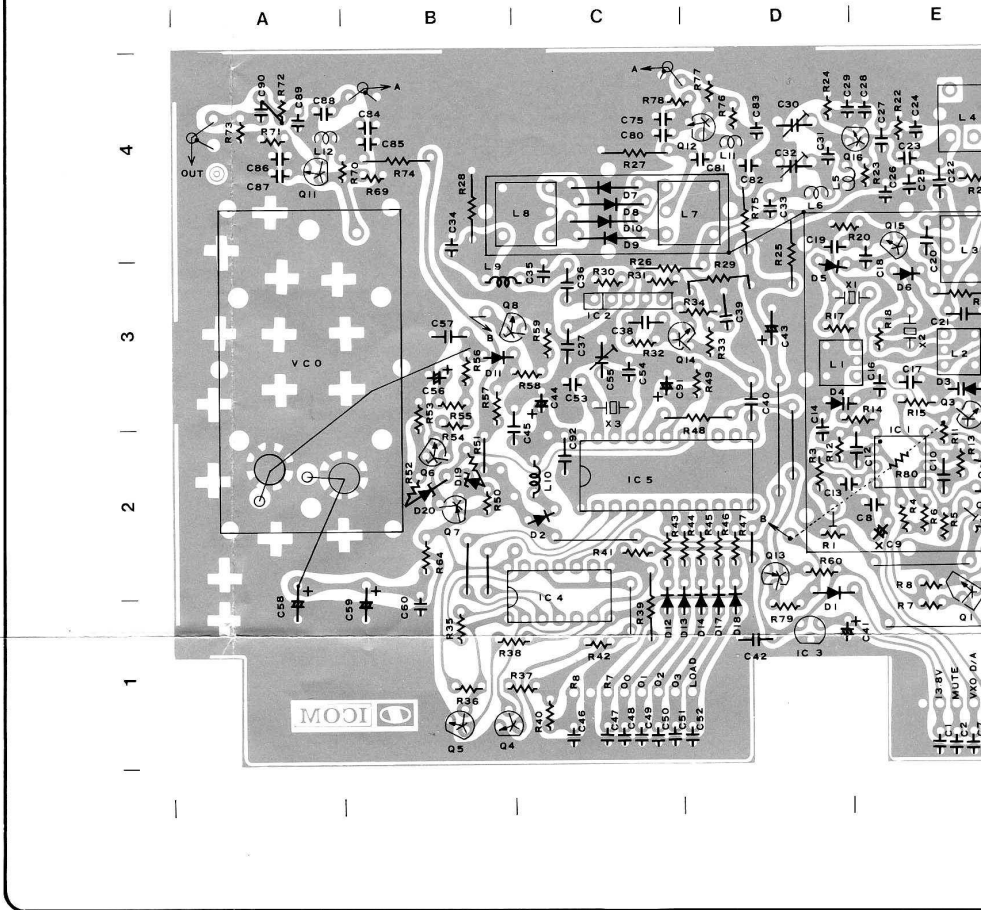


PLL / 2nd MIXER UNIT

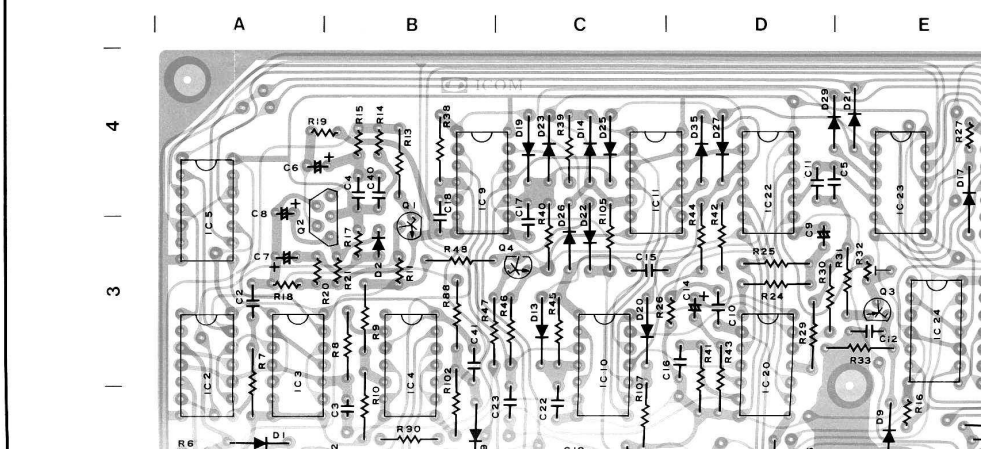


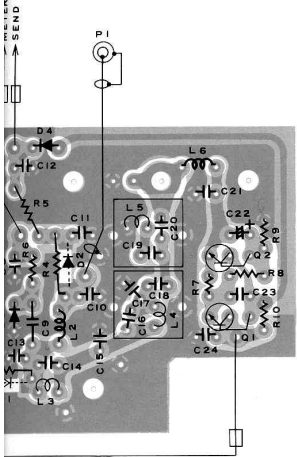


PLL / 2nd MIXER UNIT

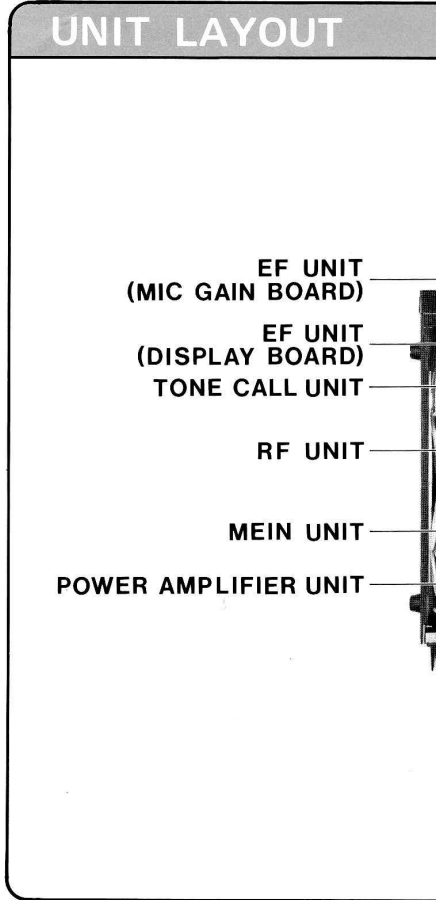
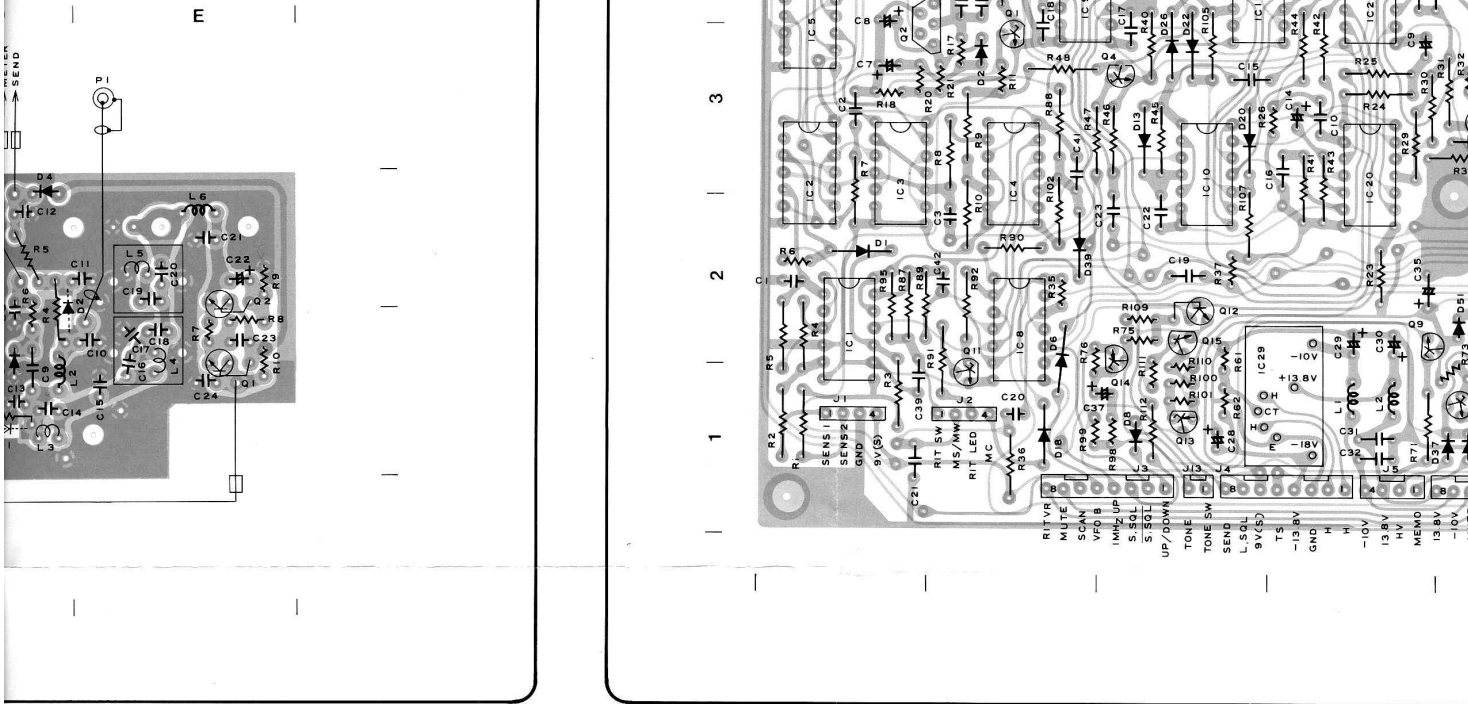
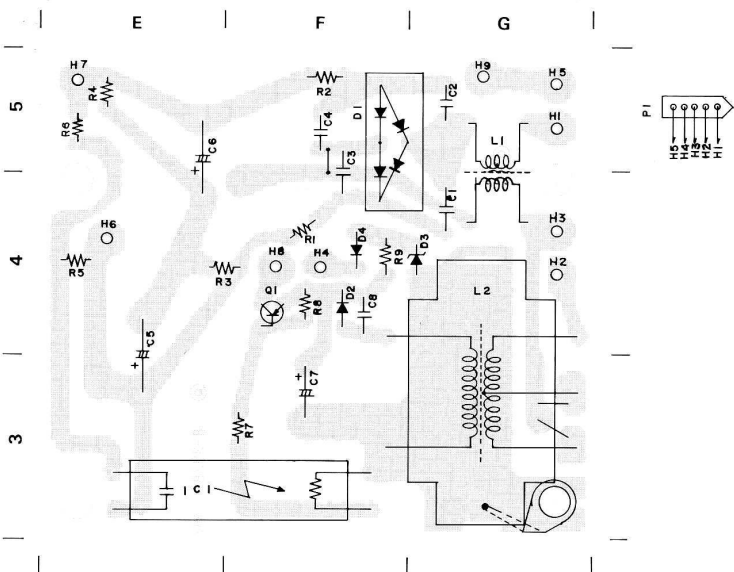


DRIVER UNIT





PI BOARD

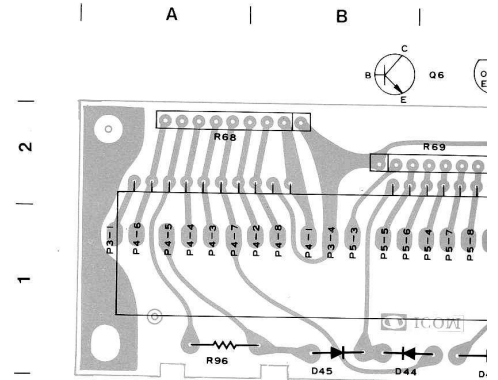
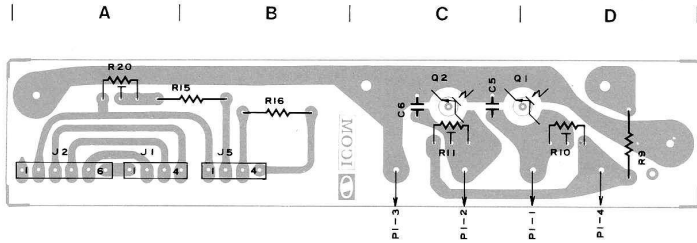
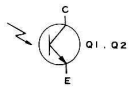


ICOM INCOR

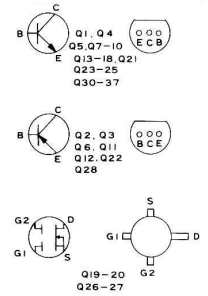
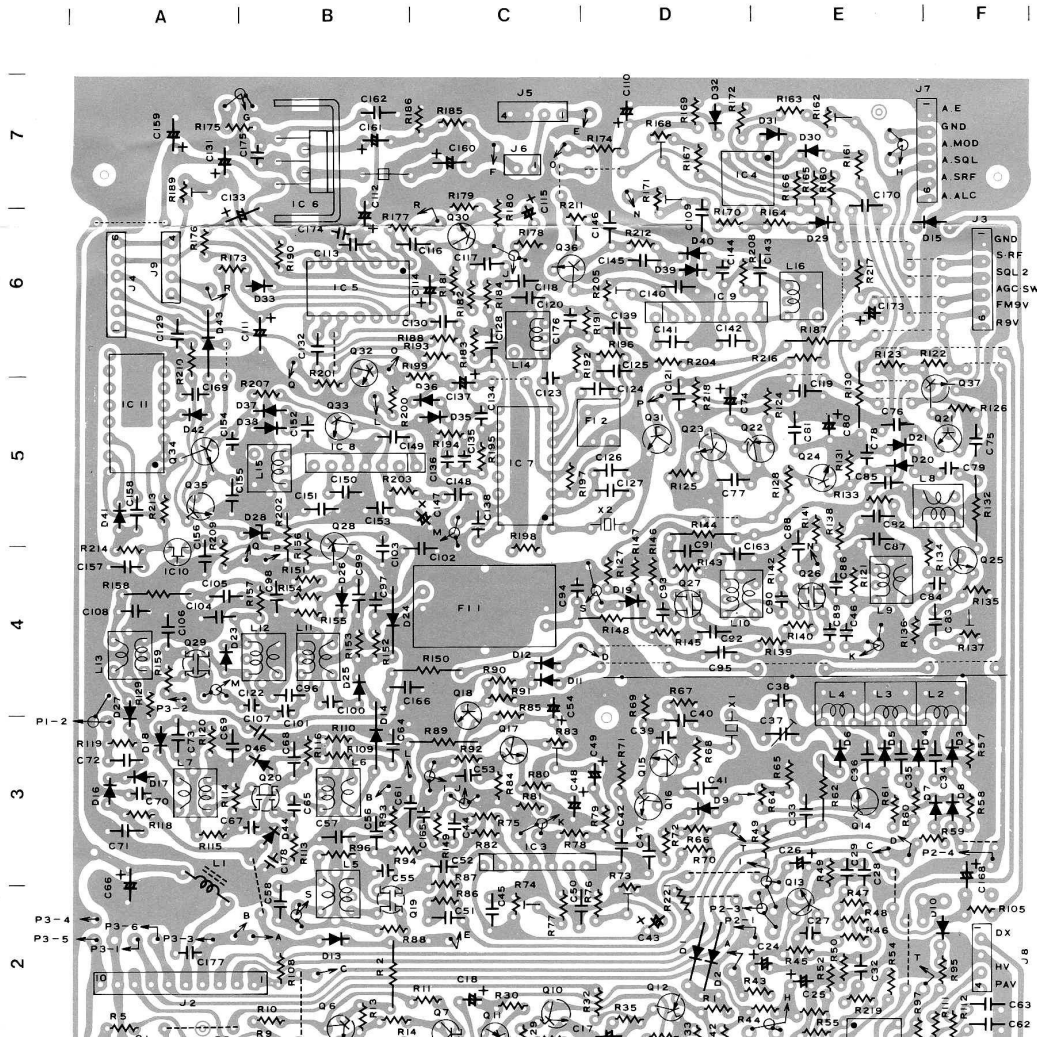
EF UNIT

■ DISPLAY BOARD

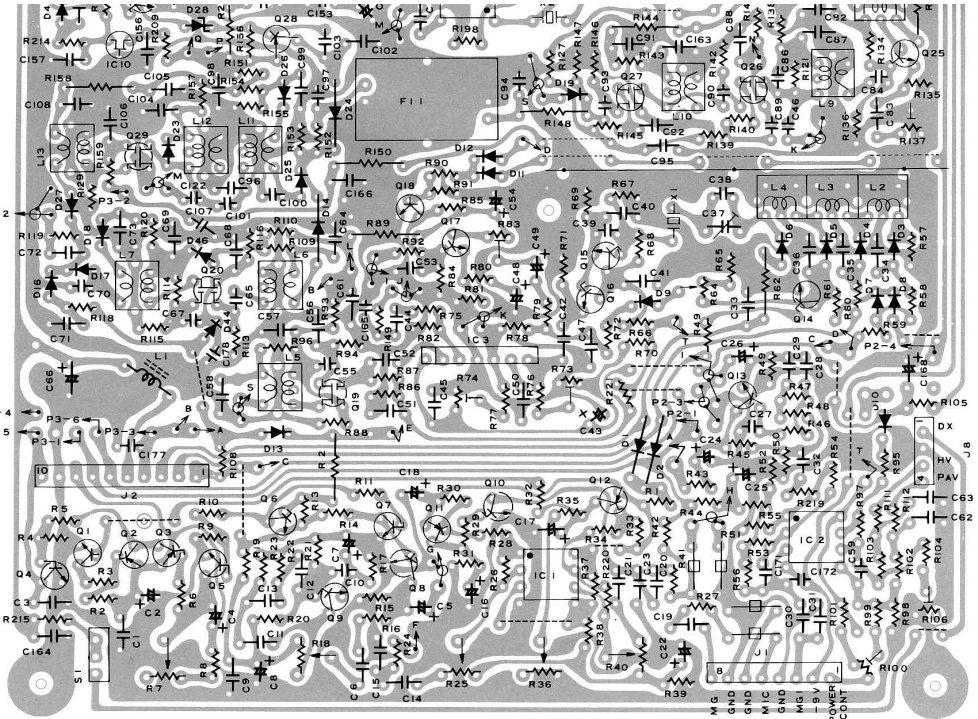
■ SENSOR BOARD



MAIN UNIT

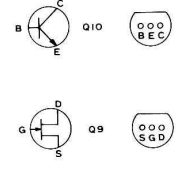
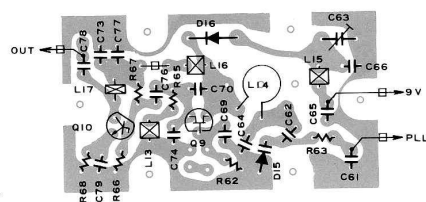


4
3
2
1



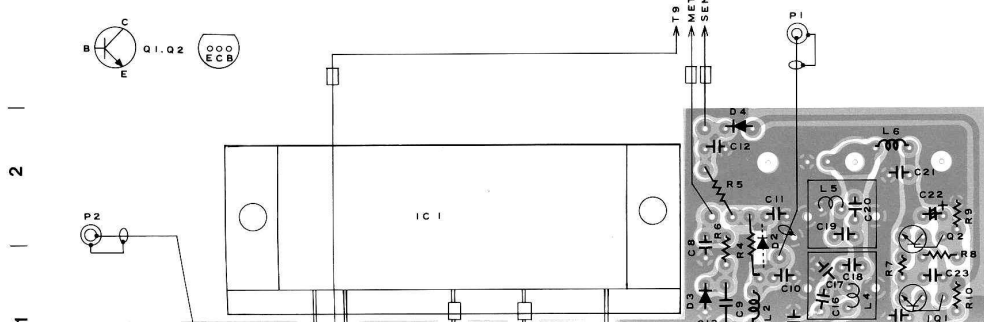
VCO UNIT

A B

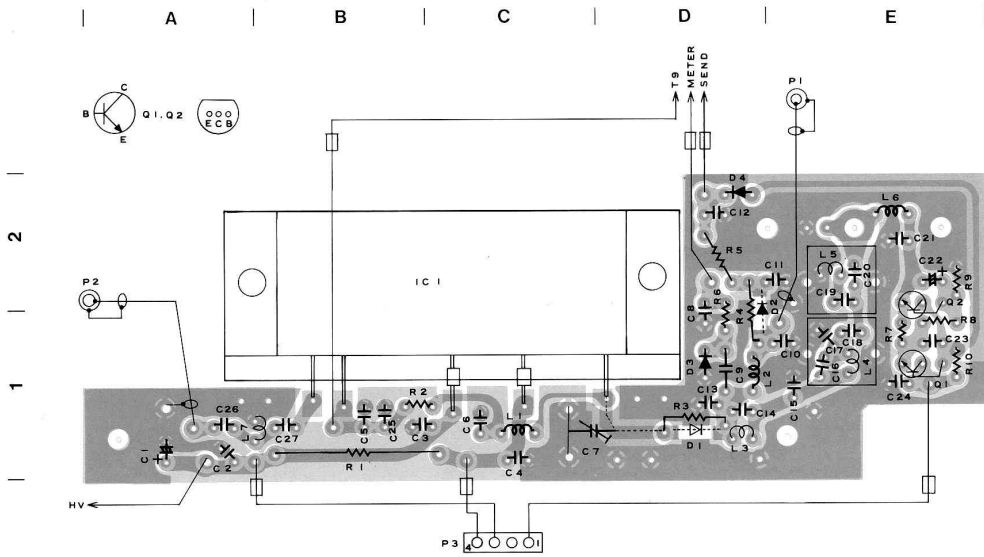


POWER AMPLIFIER UNIT

A B C D E

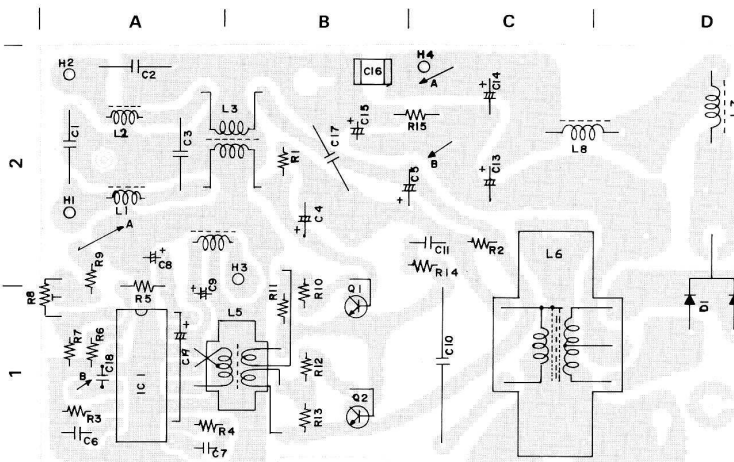


POWER AMPLIFIER UNIT



POWER SUPPLY UNIT

SWITCHING REGULATOR BOARD



PI BOARD

